



MSU Health Care

HEART & VASCULAR CENTER



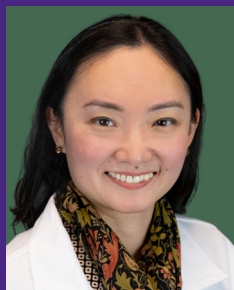
**George Abela,
MD, MSc, FACC**
Cardiology



**Charles Hong,
MD, PhD, FAHA**
Cardiology



**Mary Smania,
DNP, FNP-BC, AGN-BC, FAANP**
Genetics



**Huiting Chen,
MD, RPVI**
Vascular Surgery



**Jordan Knepper,
MD, MSc**
Vascular Surgery



**Judith Lin,
MD, MBA, DFSVS**
Vascular Surgery



Personalized Cardiovascular Care

The MSU Health Care Heart and Vascular Center combines cardiology and vascular surgery in one location to facilitate personalized treatment and support for Cardiovascular conditions such as abdominal aortic aneurysm (AAA), complex venous disease, deep vein thrombosis, varicose veins, and nonhealing ulcers.

MSU Health Care Heart and Vascular Center provides diagnosis, testing, medical management, procedures and surgical interventions to prevent and manage cardiovascular disease. We are here to serve the hearts and veins of our community.



7 3 3 3 7
844-90-Refer
SPARTAN REFERRAL HOTLINE



517-267-2462

go.msu.edu/hvc

Heart and Vascular Center

4660 S. Hagadorn Rd, Ste 600
East Lansing, MI 48823

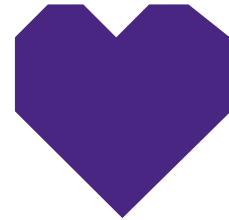
Heart and Vascular Center | Clinical Center

Outpatient Vascular Lab
804 Service Rd, Ste A204
East Lansing, MI 48824

Phone: 517.267.2460

Fax: 517.884.2462

Hours: Monday-Thursday 8:00am-5:00pm
Friday 8:00am-12:00pm



Cardiology Services

- Ambulatory blood pressure monitoring
- Cardiac rhythm remote monitoring
- Cardiology consultations
- Cardiovascular genetics testing & counseling
- Echocardiography
- EKG testing
- Holter monitoring
- Non-invasive cardio testing
- Management of cardiac arrhythmias
- Management of cardiac catheterization including coronary angiography
- Pre-op surgery clearances
- Stress-tests

Vascular Surgery & Non-Invasive Imaging

- AAA repair (Open)
- Amputation
- Aortobifemoral (ABF) bypass
- Carotid endarterectomy (CEA)
- Comprehensive dialysis access maintenance
- Deep venous reconstruction
- Endovascular abdominal or thoracic aortic aneurysm repair/dissection (EVAR, TEVAR)
- Endovenous laser treatment (EVLT) or radiofrequency ablation (RFA)
- Femoro-distal bypass
- Inferior vena cava filter (IVC) placement or retrieval
- Mesenteric ischemia
- Minimally invasive peripheral artery interventions and diagnostics
- Minimal Invasive venous interventions and diagnostics
- Mini-phlebectomy
- Percutaneous mechanical thrombectomy for iliofemoral DVT
- Sclerotherapy
- Spine exposure
- Sports performance/ functional athlete vascular disease
- Thoracic outlet decompression
- Transcarotid arterial revascularization (TCAR)
- Venous stenting